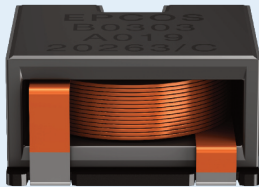


EPCOS Sample Kit 2020

# ERU Chokes

ERU 19 Series – B82559B\*A019



## ERU Chokes – ERU 19 (SMD)

<b>L (inductance) ±10%</b>	<b>μH</b>	<b>1.0</b>	<b>1.5</b>	<b>2.2</b>	<b>3.3</b>	<b>4.7</b>
$I_{sat, typ}$ (+25 °C)	A	46.6	48.1	43.6	35.1	25.5
$R_{DC}$ (nom)	mΩ	0.95	1.35	1.80	2.25	2.25
Height $h_{max}$	mm	8.0	9.0	9.6	10.6	10.6
Ordering code	B82559	B2102A019	B3152A019	B4222A019	B5332A019	B5472A019
<b>L (inductance) ±10%</b>	<b>μH</b>	<b>6.8</b>	<b>10.0</b>	<b>15.0</b>	<b>20.0</b>	<b>30.0</b>
$I_{sat, typ}$ (+25 °C)	A	21.3	15.8	14.7	13.5	11.5
$R_{DC}$ (nom)	mΩ	7.60	8.80	11.00	13.50	17.00
Height $h_{max}$	mm	8.0	8.0	9.0	9.6	10.6
Ordering code	B82559	B6682A019	B7103A019	B9153A019	B0203A019	B0303A019

- All values measured at +25 °C ambient temperature
- $I_{sat, typ}$  is current that will result in an app. 20% drop inductance values
- Operating temperature range: -40 °C ... +150 °C (component)
- Qualified to AEC-Q200
- RoHS compatible
- Tape and reel packing: 32 mm blister tape, 330 mm reel

Height of component $h_{max}$	Blister tape (H)	Packing unit per reel
8.0 mm	8.0 mm	220 pcs.
9.0 mm	9.0 mm	210 pcs.
9.6 mm	9.6 mm	200 pcs.
10.6 mm	10.6 mm	180 pcs.

