



Sample Kit

# ERU Chokes

ERUC23, SMT flat wire coupled  
inductor – B82559S\*M023



[www.tdk-electronics.tdk.com](http://www.tdk-electronics.tdk.com)

## ERU Chokes – ERUC23, SMT flat wire coupled inductor – B82559S\*M023

$L_{3, \text{nom}}$	$\mu\text{H}$	4.1	3.2	2.8	2.2	1.8	1.4
$I_{\text{sat-max } 25\text{ }^\circ\text{C}}$	A	45.0	57.5	55.0	71.0	73.0	88.0
$I_{\text{sat-typ } 25\text{ }^\circ\text{C}}$	A	50.0	63.5	61.0	77.0	81.0	97.0
$I_{\text{sat-typ } 100\text{ }^\circ\text{C}}$	A	39.5	49.0	47.0	58.0	62.0	73.0
$I_{\text{Temp-typ}}$	A	24.0	24.0	27.0	27.0	33.0	33.0
$L_1, L_2 \text{ nom}$	$\mu\text{H}$	7.9	5.9	5.4	4.1	3.5	2.6
$R_{\text{DC1}}, R_{\text{DC2 nom}}$	$\text{m}\Omega$	1.85	1.85	1.25	1.25	0.82	0.82
<b>Height <math>\pm 0.3</math></b>	mm	13.7	13.7	13.8	13.8	14.0	14.0
<b>Internal code</b>	B82559*	S6412M023	S6322M023	S5282M023	S5222M023	S4182M023	S4142M023
<b>Ordering code</b>		ERUC23-4R1K	ERUC23-3R2K	ERUC23-2R8K	ERUC23-2R2K	ERUC23-1R8K	ERUC23-1R4K

### Construction

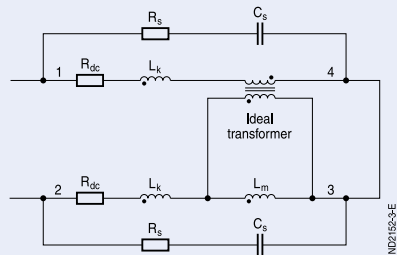
- Low loss ferrite
- Flat wire winding
- Self-leaded construction

### Applications

- Dual phase buck, boost, and buck-boost converters
- 48  $V_{\text{in}}$  – 12  $V_{\text{out}}$  hybrid converter

### Features

- High saturation current
- Low DC resistance
- RoHS-compatible
- Compact coupled inductors
- AEC-Q200 qualified



**Content: 2 pcs. per ordering code**