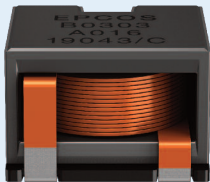


Sample Kit 2020

# ERU Chokes

ERU 16 Series – B82559B\*A016



## ERU Chokes – ERU 16 (SMD)

<b>L (inductance) ±10%</b>	<b>μH</b>	<b>1.0</b>	<b>1.5</b>	<b>2.2</b>	<b>3.3</b>	<b>4.7</b>
$I_{sat, typ}$ (+25 °C)	A	40.4	40.5	37.3	30.9	21.3
$R_{DC}$ (nom)	mΩ	1.0	1.4	1.8	2.2	2.2
Height $h_{max}$	mm	7.55	8.45	9.45	10.35	10.35
Ordering code	B82559	B2102A016	B3152A016	B4222A016	B5332A016	B5472A016
<b>L (inductance) ±10%</b>	<b>μH</b>	<b>6.8</b>	<b>10.0</b>	<b>15.0</b>	<b>20.0</b>	<b>30.0</b>
$I_{sat, typ}$ (+25 °C)	A	18.7	14.6	14.0	12.4	10.3
$R_{DC}$ (nom)	mΩ	6.2	7.2	10.2	12.1	15.4
Height $h_{max}$	mm	8.45	8.45	9.45	10.35	11.10
Ordering code	B82559	B6682A016	B7103A016	B0153A016	B0203A016	B0303A016

- All values measured at +25 °C ambient temperature
- $I_{sat, typ}$  is current that will result in an app. 20% drop in inductance values
- Operating temperature range: -40 °C ... +150 °C (component)
- Qualified to AEC-Q200
- RoHS compatible
- Tape and reel packing: 32 mm blister tape, 330 mm reel

Height of component $h_{max}$	Blister tape (H)	Packing unit per reel
7.55 mm	7.7 mm	300 pcs.
8.45 mm	8.6 mm	280 pcs.
9.45 mm	9.6 mm	250 pcs.
10.35 mm	10.5 mm	210 pcs.
11.10 mm	11.5 mm	170 pcs.

